

# Rotkilen Business Park

Municipality of Töreboda

# Welcome to Skaraborg

At the center of Scandinavia and as part of the largest industrial region in the Nordic region, Skaraborg is facing unique growth! There are strong clusters and innovation environments and well-functioning collaboration between business, academia and the public sector. Established networks, an entrepreneurial business climate and personal commitment at all levels give you the conditions to succeed.

**THIS IS WHERE IT HAPPENS!**



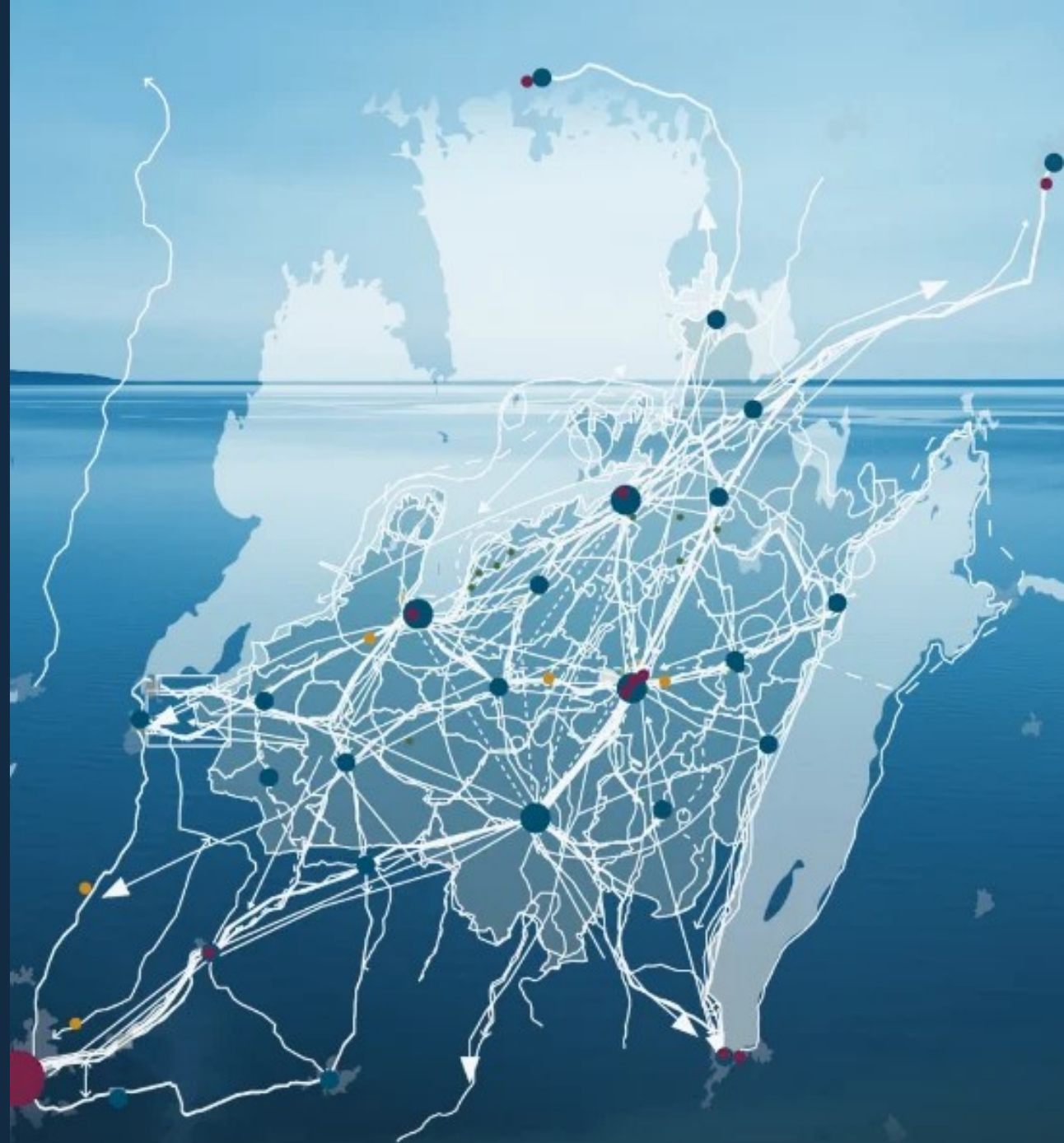
# Locate to Skaraborg

Skaraborg has a strategic location with close distance to Stockholm, Oslo and Copenhagen.

The optimal location will be a geographical hub for companies that want to reach out and expand in the Scandinavian market, further out in the world. It has train connections, ports and highway for effectively connection.

It is also home to the Skaraborg Logistic Center, which provides advanced and sustainable logistics solutions.

**WELCOME TO JOIN US!**



# Why Skaraborg?

The combination of growth focus and long-term sustainability is a strategic success factor that makes Skaraborg one of Scandinavia's most exciting future regions.

There are 15 municipalities with just over 270,000 inhabitants that are part of the Västra Götaland region with 1.7 million inhabitants.

**WANT TO KNOW MORE? [CONTACT US!](#)**



Good connections with fast trains to Stockholm, Gothenburg and further out into the world



One fifth of Sweden's industrial employees are in West Sweden and Skaraborg



Well-developed and strong structure of subcontractors to industry and ICT



Skaraborg is centrally located, allowing businesses to reach the Nordics and international locations with ease and affordability



Access to around 135,000 university students within 2 hours travel time

# Quick facts | Rotkilen Business Park

- Surface area: 190 000 m<sup>2</sup>
- Exploitation rate: 60 %
- Building height: 10 m
- Property designation: Rotkilen Borreboda 18:1
- Electricity area: SE3
- Suitable for: Industry, Logistics, Energy intensive operations

# Plant area | General information

The site is owned by Töreboda municipality and is zoned for industry. The site is located on road 200 just outside Töreboda town, where there is a railway connection. Additional land for industry is planned next to the site.

Töreboda municipality is characterized by its many manufacturing industries and by the Göta Canal, which winds through most of the municipality. Linked to the canal, there is also a vibrant tourism industry. New large areas to enable industrial establishments are currently being developed by Töreboda municipality.

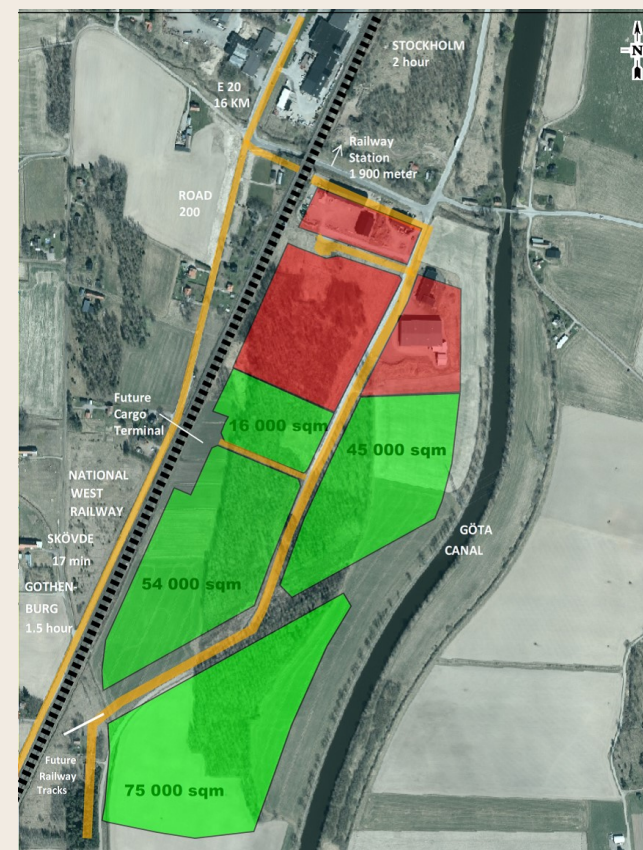
Töreboda municipality is part of the Swedish Agency for Economic and Regional Development's support area.



Coordinates: 58.691875, 14.117801



[Google maps- link to the site](#)





# Plant area | Location



[Drone- flight to overview site](#)

# Contact us



[businessregion@skaraborg.se](mailto:businessregion@skaraborg.se)



Stationsgatan 3, Skövde



Box 54, SE 541 22, Skövde



Alexandra Norlander Tornberg  
+46(0)72-210 63 81

[alexandra.nt@skaraborg.se](mailto:alexandra.nt@skaraborg.se)



Peter Yström  
+46(0)79-066 53 13

[peter.ystrom@skaraborg.se](mailto:peter.ystrom@skaraborg.se)



Lisa Mujagic  
+46(0)70-256 62 68

[lisa.mujagic@skaraborg.se](mailto:lisa.mujagic@skaraborg.se)