

Jonstorp Smuleberg

Municipality of Tibro

Welcome to Skaraborg

At the center of Scandinavia and as part of the largest industrial region in the Nordic region, Skaraborg is facing unique growth! There are strong clusters and innovation environments and well-functioning collaboration between business, academia and the public sector. Established networks, an entrepreneurial business climate and personal commitment at all levels give you the conditions to succeed.

THIS IS WHERE IT HAPPENS!



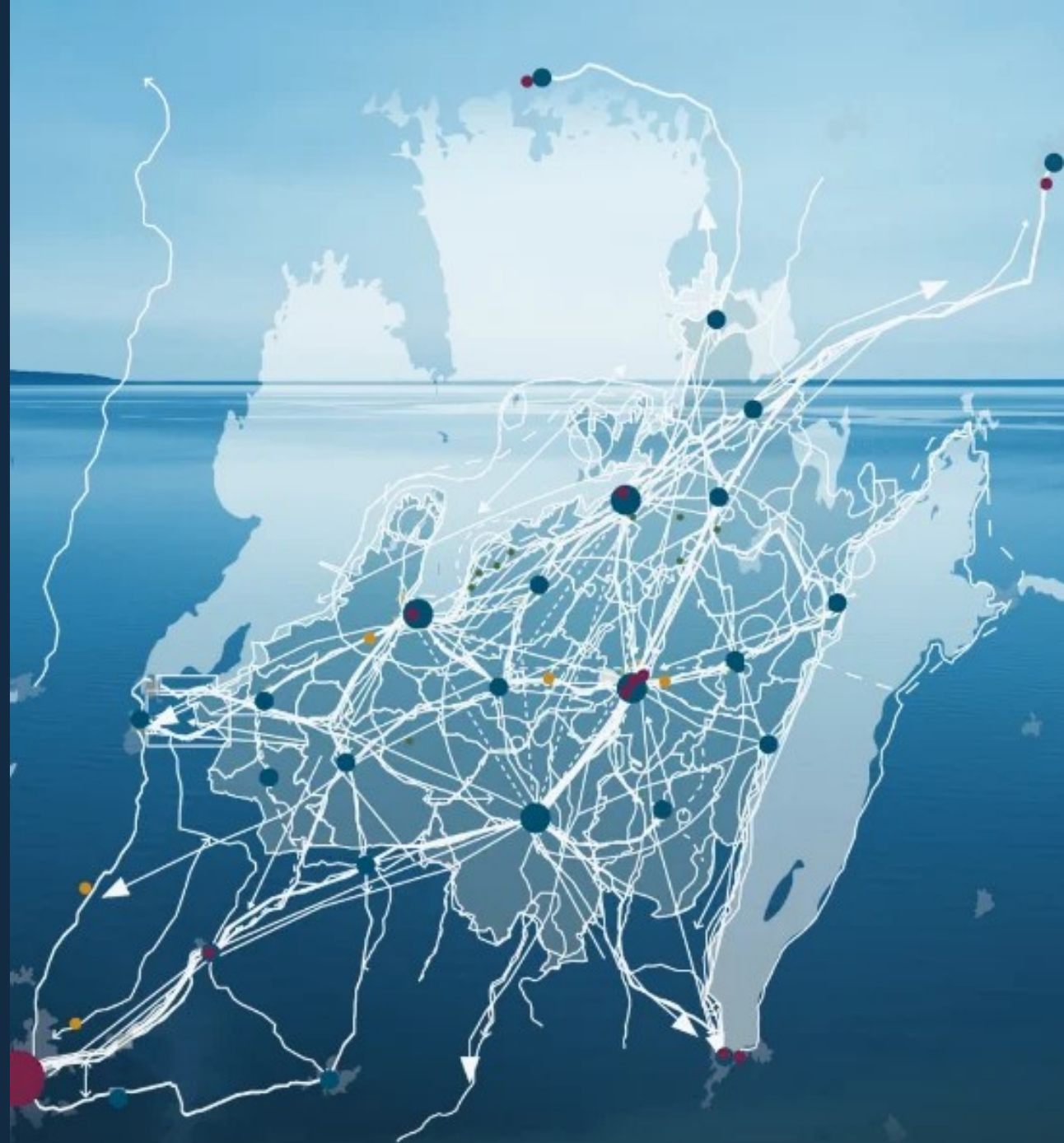
Locate to Skaraborg

Skaraborg has a strategic location with close distance to Stockholm, Oslo and Copenhagen.

The optimal location will be a geographical hub for companies that want to reach out and expand in the Scandinavian market, further out in the world. It has train connections, ports and highway for effectively connection.

It is also home to the Skaraborg Logistic Center, which provides advanced and sustainable logistics solutions.

WELCOME TO JOIN US!



Why Skaraborg?

The combination of growth focus and long-term sustainability is a strategic success factor that makes Skaraborg one of Scandinavia's most exciting future regions.

There are 15 municipalities with just over 270,000 inhabitants that are part of the Västra Götaland region with 1.7 million inhabitants.

WANT TO KNOW MORE? [CONTACT US!](#)



Good connections with fast trains to Stockholm, Gothenburg and further out into the world



One fifth of Sweden's industrial employees are in West Sweden and Skaraborg



Well-developed and strong structure of subcontractors to industry and ICT



Skaraborg is centrally located, allowing businesses to reach the Nordics and international locations with ease and affordability



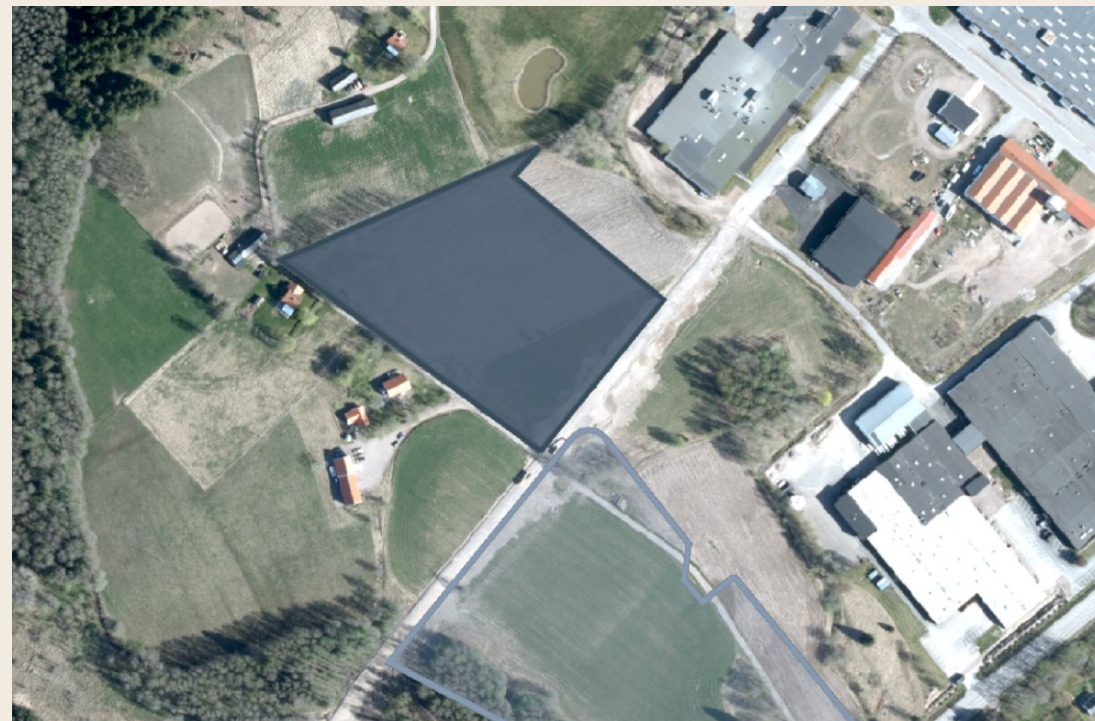
Access to around 135,000 university students within 2 hours travel time

Quick facts | Jonstorp Smuleberg

- Surface area: 18 000 m²
- Building height: 9 m
- Property code: Smuleberg 1:266
- Electricity area: SE3
- Suitable for: Industry, Logistics, Energy intensive operations

Plant area | General information

The site is owned by Tibro municipality and is zoned for industry. In close proximity to the site there is another site, Balteryd of 34 000 m², which is also for sale (light marking on the map). The site is located on the outskirts of Tibro town, just off road 49. Road 49 runs between Skövde and Askersund and connects to the E20, which runs between Stockholm and Gothenburg.



Coordinates: 58.425194, 14.131021



[Google maps- link to the site](#)



[Drone- flight to overview site](#)

Contact us



businessregion@skaraborg.se



Stationsgatan 3, Skövde



Box 54, SE 541 22, Skövde



Alexandra Norlander Tornberg
+46(0)72-210 63 81

alexandra.nt@skaraborg.se



Peter Yström
+46(0)79-066 53 13

peter.ystrom@skaraborg.se



Lisa Mujagic
+46(0)70-256 62 68

lisa.mujagic@skaraborg.se