

# Karlsborg Svanvik

Municipality of Karlsborg

# Welcome to Skaraborg

At the center of Scandinavia and as part of the largest industrial region in the Nordic region, Skaraborg is facing unique growth! There are strong clusters and innovation environments and well-functioning collaboration between business, academia and the public sector. Established networks, an entrepreneurial business climate and personal commitment at all levels give you the conditions to succeed.

**THIS IS WHERE IT HAPPENS!**



# Locate to Skaraborg

Skaraborg has a strategic location with close distance to Stockholm, Oslo and Copenhagen.

The optimal location will be a geographical hub for companies that want to reach out and expand in the Scandinavian market, further out in the world. It has train connections, ports and highway for effectively connection.

It is also home to the Skaraborg Logistic Center, which provides advanced and sustainable logistics solutions.

**WELCOME TO JOIN US!**



# Why Skaraborg?

The combination of growth focus and long-term sustainability is a strategic success factor that makes Skaraborg one of Scandinavia's most exciting future regions.

There are 15 municipalities with just over 270,000 inhabitants that are part of the Västra Götaland region with 1.7 million inhabitants.

**WANT TO KNOW MORE? [CONTACT US!](#)**



[Drone- flight to overview site](#)



Good connections with fast trains to Stockholm, Gothenburg and further out into the world



One fifth of Sweden's industrial employees are in West Sweden and Skaraborg



Well-developed and strong structure of subcontractors to industry and ICT



Skaraborg is centrally located, allowing businesses to reach the Nordics and international locations with ease and affordability



Access to around 135,000 university students within 2 hours travel time

# Quick facts | Karlsborg Svanvik

- Surface area: 10 000 m<sup>2</sup>
- Exploitation rate: 50 %
- Building height: 12 m
- Property description: Karlsborg Svanvik 3:110
- Electricity area: SE3
- Suitable for: Commerce, Industry, Logistics, Energy intensive activities, Recycling

# Plant area | General information

The site is owned by Karlsborg Municipality and is zoned for industry. It is divided into two parts. The site is located in the Svanvik area, which is close to road 49. The location is strategic with good connections to Örebro Airport, Skövde (with train to Stockholm and Gothenburg) and Falköping and Skaraborg Logistic Center – Skaraborg's largest logistics hub with direct access to the Port of Gothenburg.

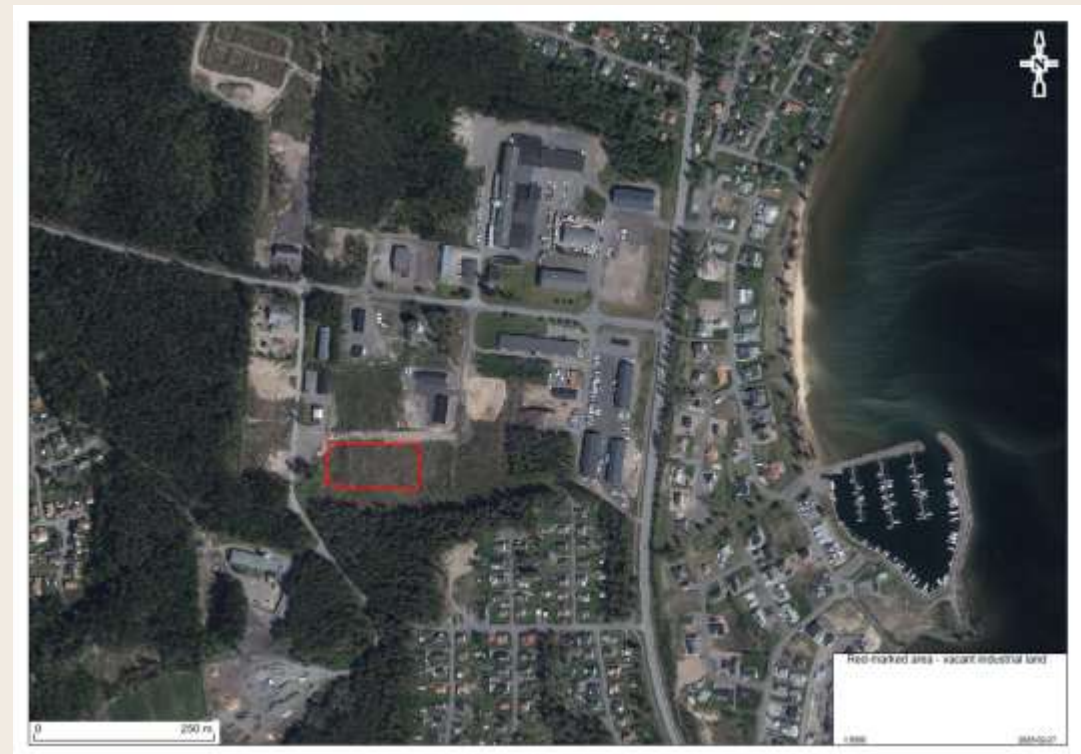
The municipality's largest industrial area, with 15 different companies, for example: Brodit AB, Precikap AB and Different Cars AB. The area borders to a mix of small and big companies, close to Road 49 and several housing areas.



Coordinates: 58.55044692800004, 14.492398852000065



[Google maps- link to the site](#)



# Contact us



[businessregion@skaraborg.se](mailto:businessregion@skaraborg.se)



Stationsgatan 3, Skövde



Box 54, SE 541 22, Skövde



**Peter Yström**  
+46(0)79-066 53 13

[peter.ystrom@skaraborg.se](mailto:peter.ystrom@skaraborg.se)



**Lisa Mujagic**  
+46(0)70-256 62 68

[lisa.mujagic@skaraborg.se](mailto:lisa.mujagic@skaraborg.se)